

Weather Message Net Quick Start Guide

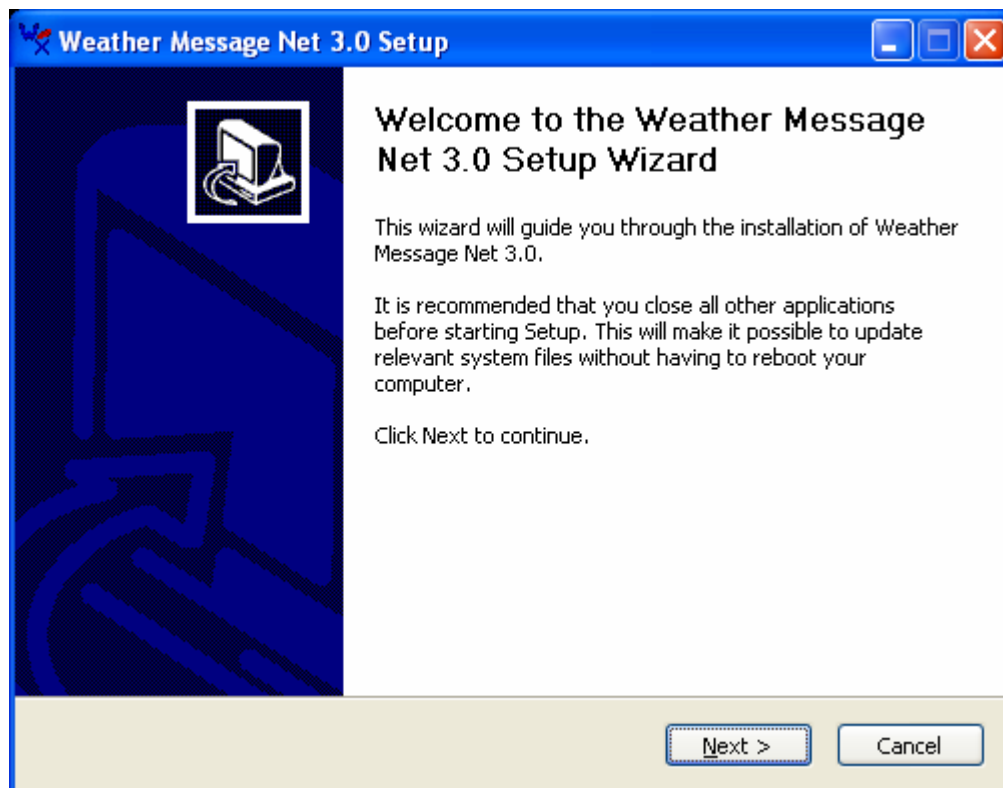
Version 3.1

The following guide will take you through the process to install and set up Weather Message. It is broken down into two sections, Software Installation and Alarm Setup.

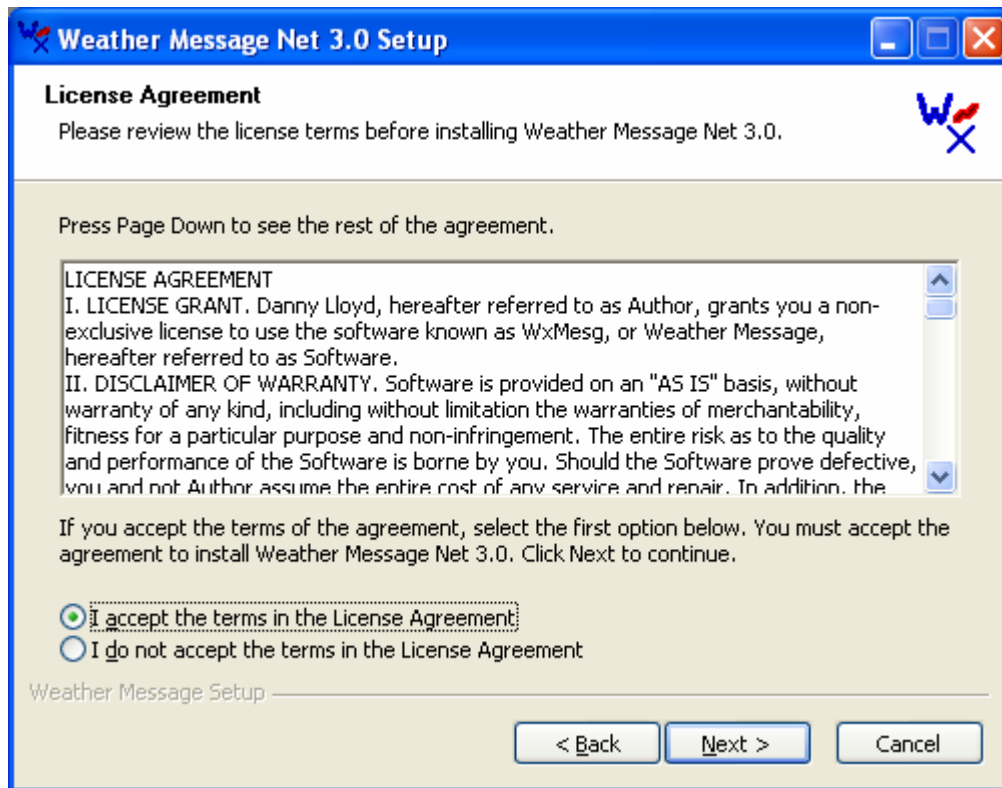
This guide provides only the basic setup. Each software application contains windows based help. Pressing the F1 key or clicking the Help, Weather Message Help option will display detailed information about the respective application.

Software Installation

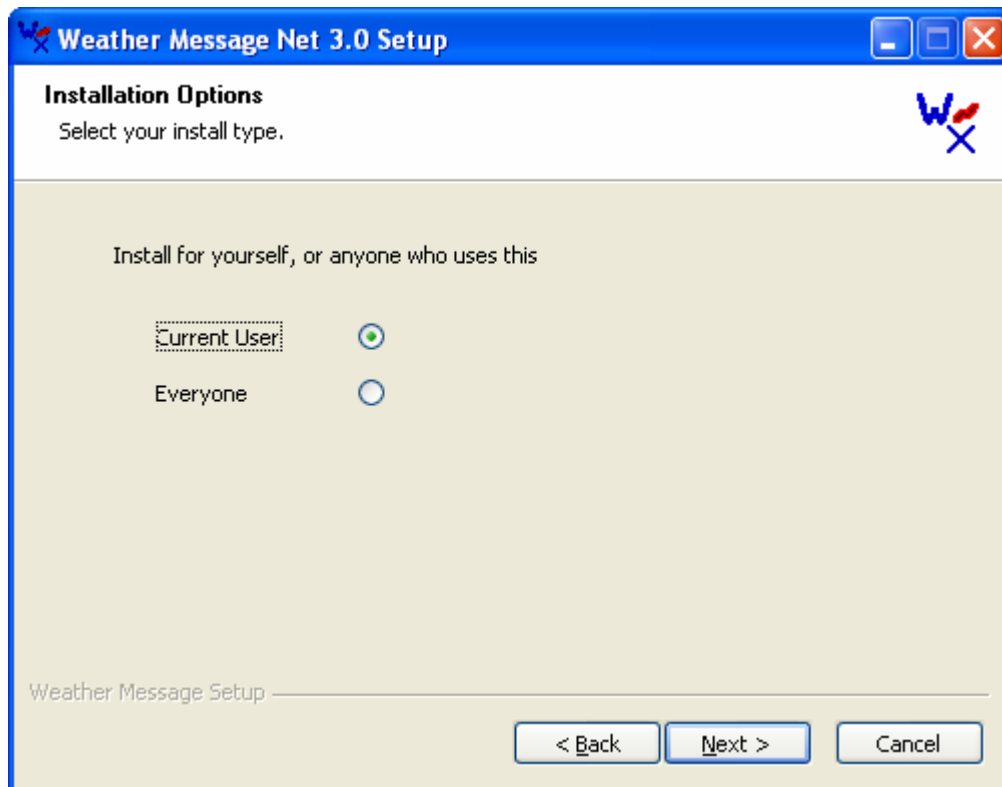
1. Begin by installing the Weather Message software.
 - a. If you received a CD, insert it in your CD drive, you will then be presented with a menu. Select Weather Message to begin the installation.
 - b. If you are downloading the software from the website, download the full installation and select open when the file is downloaded.
2. When the installation program starts, you will be presented with the following screen.



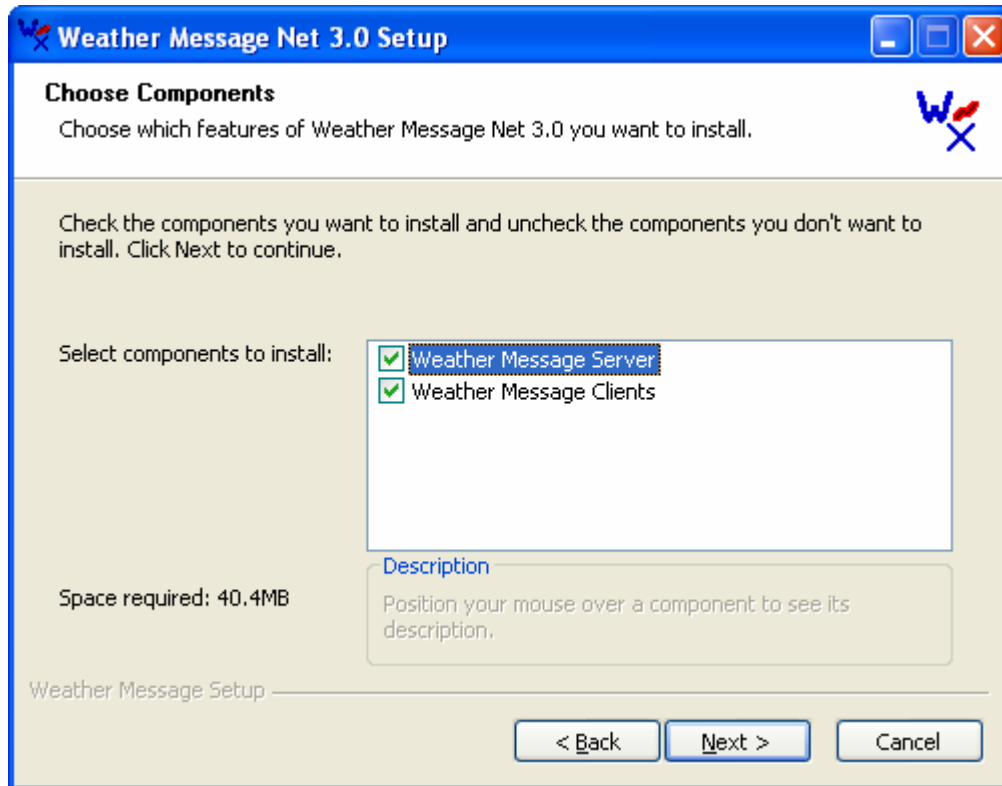
3. Click the **Next** button to start the installation.



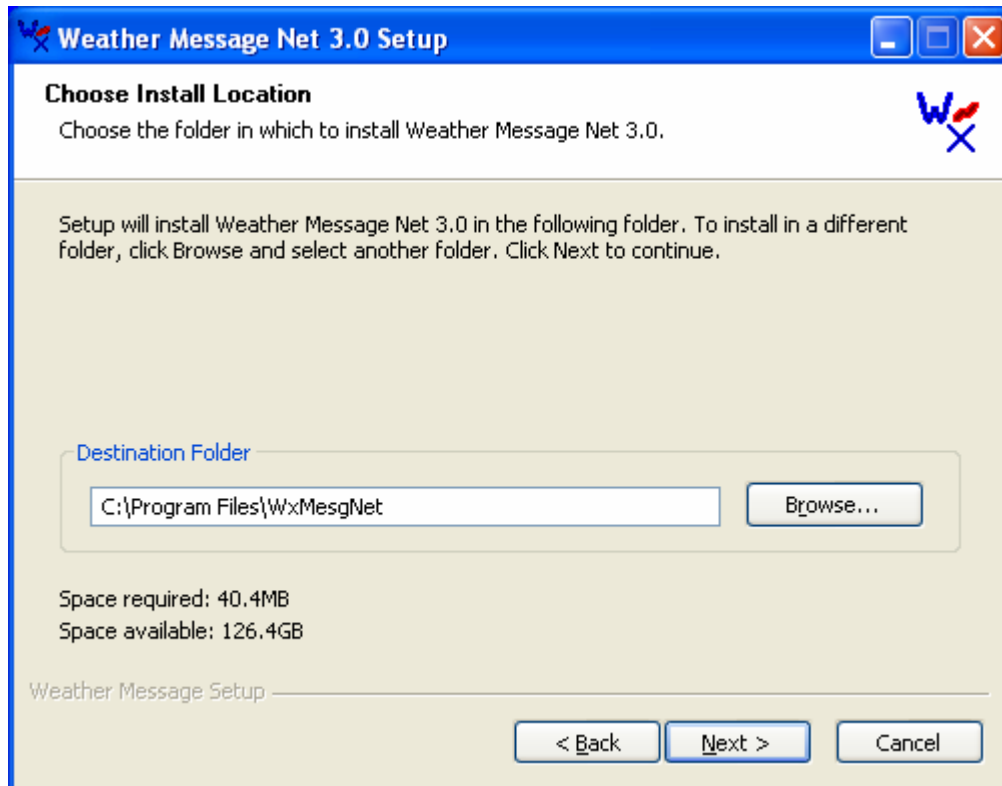
4. Read the license agreement and click on the **I accept the terms in the License Agreement** button. Then click the **Next** button.



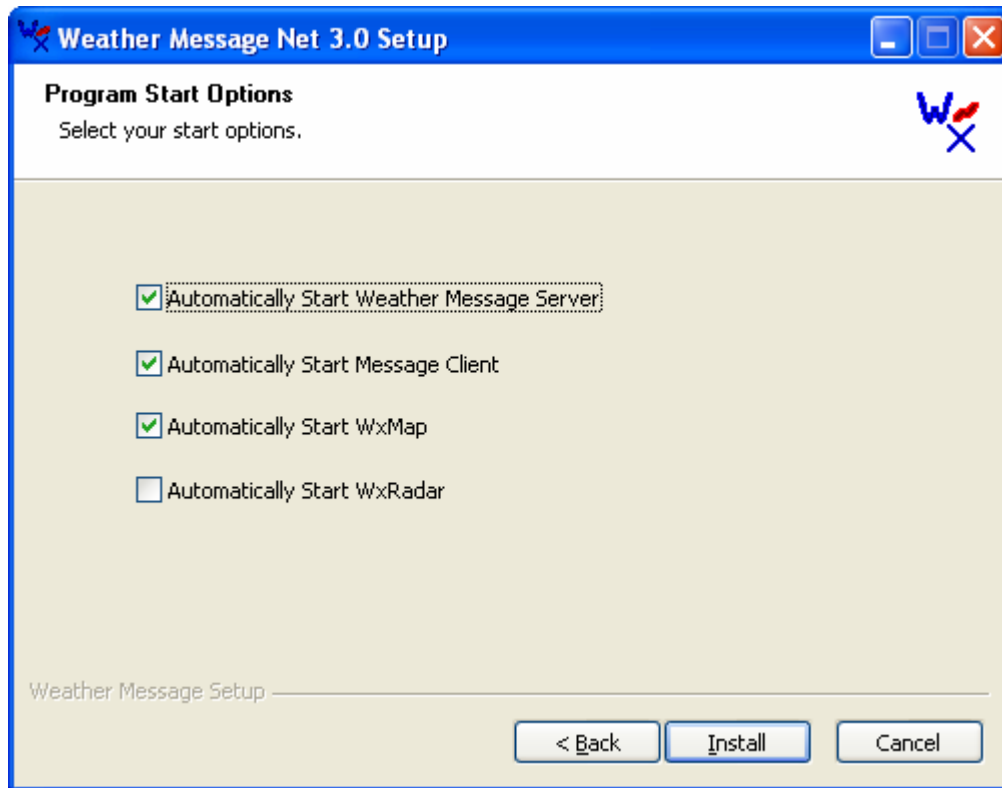
5. If you want Weather Message to be available to everyone that logs into this computer, select **All Users**. Click **Next**. *Note: You must be logged in as an Administrator to use this option.*



6. Select the components that you want to install, by clicking in the box to the left of the program. We recommend that you select all of the programs. After selecting the components, click **Next**.



7. The installation program will default the installation directory to “C:\Program Files\WxMesgNet”. Unless you have a reason to change this directory, accept the default setting by clicking **Next**.



8. If you want Weather Message to automatically start when you log into the computer, select the components to automatically start. After making these selections, Click **Install**. You will see an installation screen showing the progress of the installation.

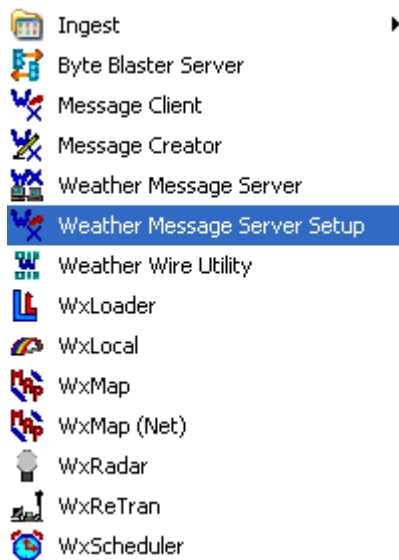
Note: You may be prompted to reboot your computer after the installation program updates your system files.

Note: Weather Message Net requires the Microsoft .Net 2.0 runtime files. If you do not have them installed on your computer, the install program will alert you to this fact and automatically download and install them from the Microsoft.com.

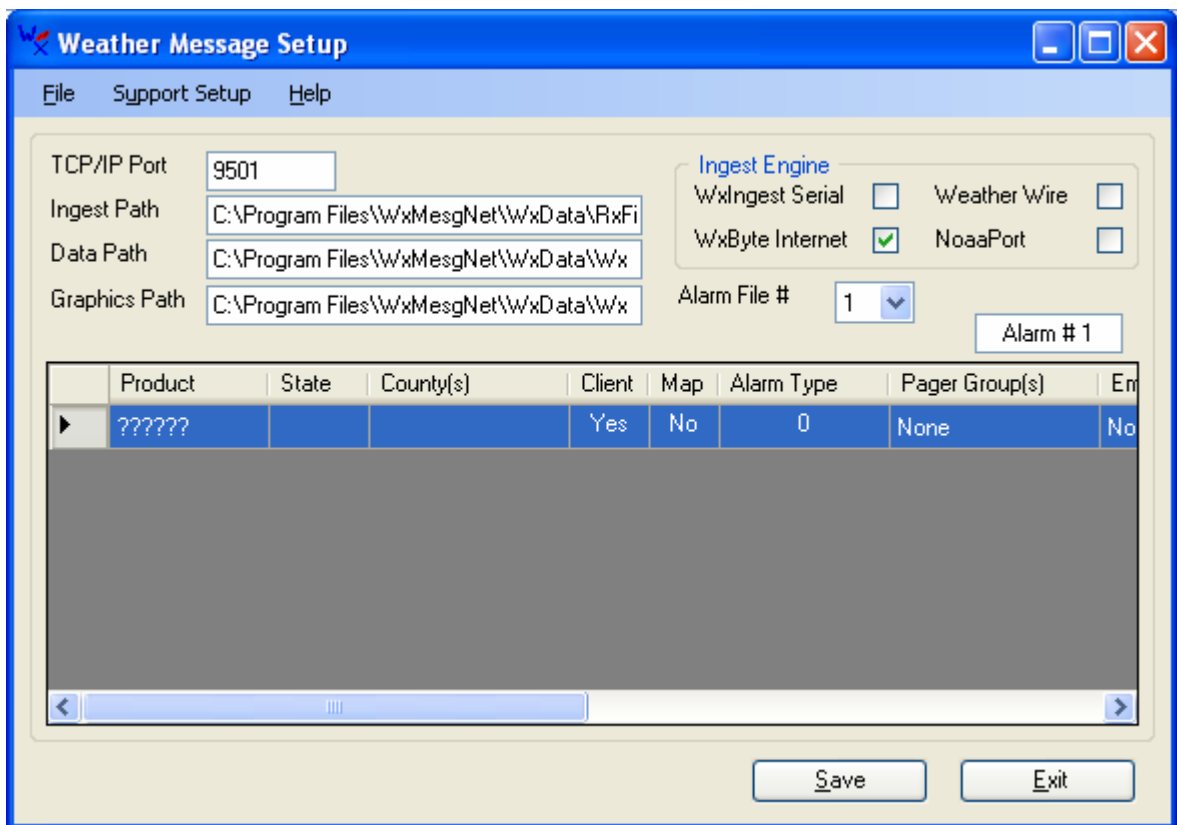
When the installation is complete, the installation program will prompt you to click the **Finish** button. After clicking the finish button, the installation program will close. You have now successfully installed Weather Message on your computer.

Software Setup

1. After the software has been installed, you will need to setup a few options before you are ready to receive weather messages. Click **Start, Programs, Weather Message, Weather Message Server Setup**.



2. Weather Message Server Setup will start. You will see this screen.

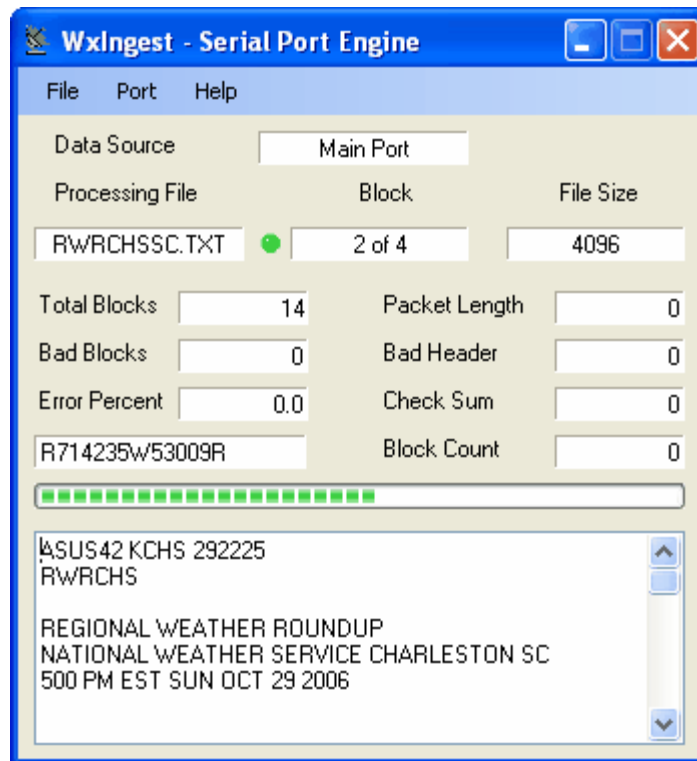


3. You will need to select the Ingest Engine that you will use to receive the EMWIN data. The program defaults to WxByte Internet. If you will be receiving data using your serial port, select WxIngest Serial.

Click **Save** to save your settings. The program will ask you if it is ok to create the directories. Answer **Yes**. The setup program will now terminate.

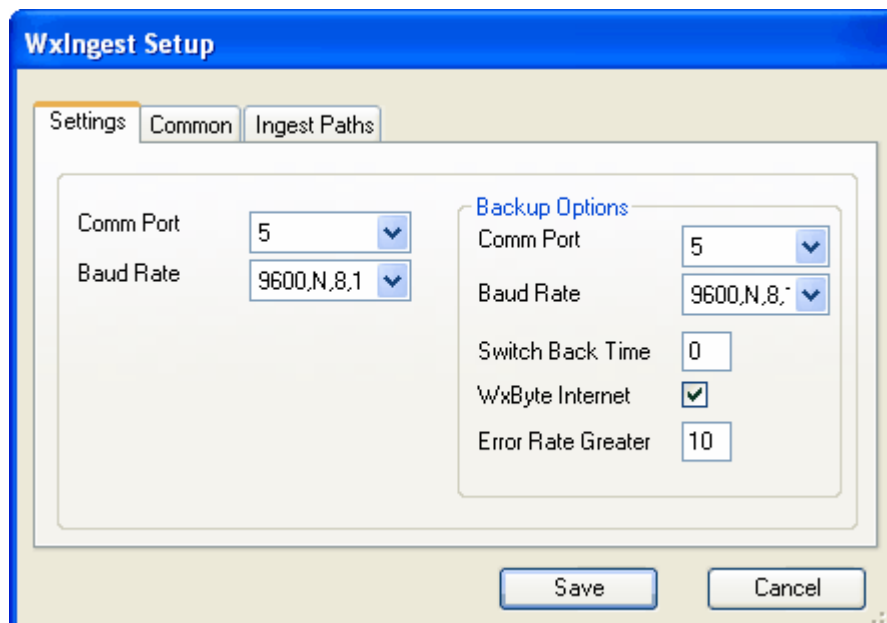
4. If you will be using the serial ingest program, WxIngest, follow these steps, otherwise skip to step 5:

- a. Click **Start, Programs, Weather Message, Ingest, and WxIngest**. You will see this screen.



The program may or may not be receiving data. Regardless continue with these steps.

- b. Click **File** then **Setup**.



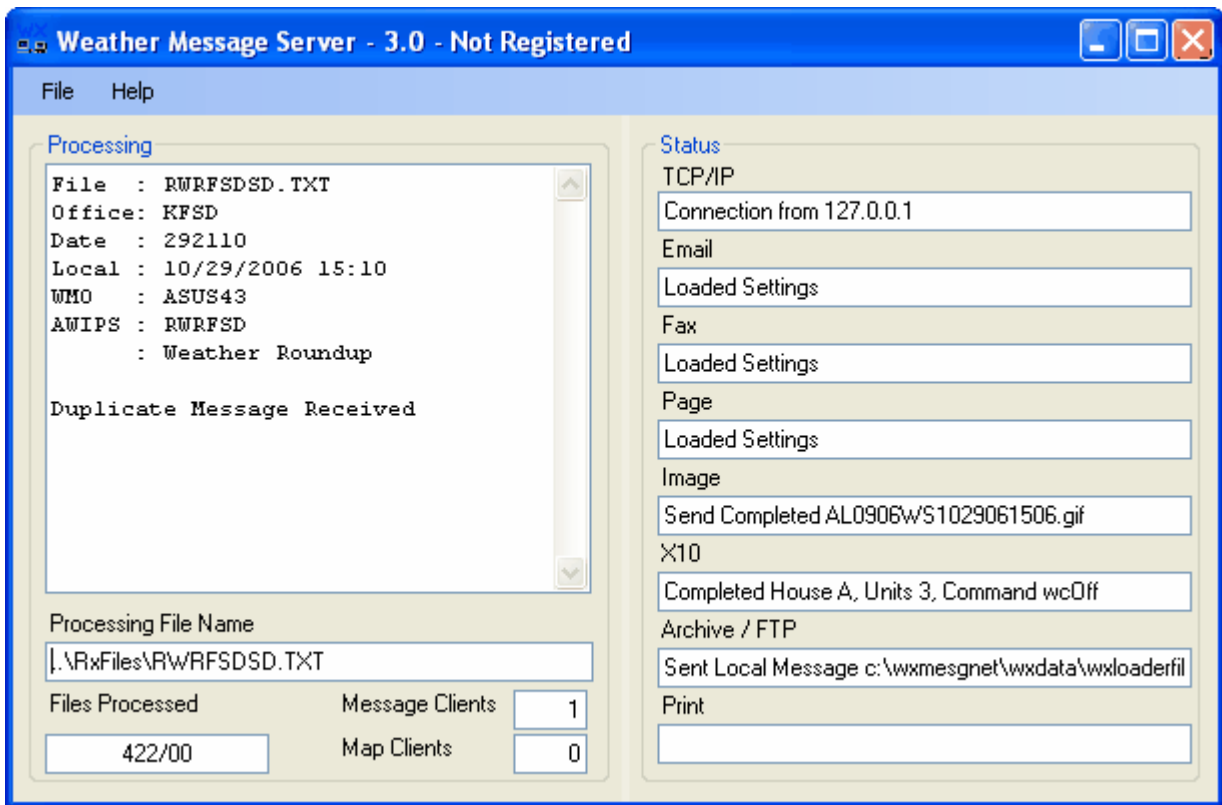
- c. On the setup screen, select the communications port that you will be using to receive the data. This is normally 1 or 2.
- d. Select the Baud Rate for your device.
 1. If you are using a satellite dish, select the default 9600,8,N,1.
 2. If you are using a 1200 baud demodulator, select 1200,N,8,2.
- e. **Save** these settings. If the program asks to create directories, go ahead and answer **Yes** to those prompts.
- f. Exit this program.

Note: Some computers may detect your satellite receiver as a serial mouse. This generally occurs when the satellite receiver is turned on when booting the computer. If this occurs, your mouse will begin to move on it's own. To correct this problem, turn off the satellite receiver. Download the comdisable tool from Microsoft at this web address <http://support.microsoft.com/default.aspx?scid=kb;en-us;819036>.

5. You are now ready to start Weather Message Server. On you desktop, click the *Weather Message Server* icon.



This will start the Weather Message Server. The Server will automatically start the ingest engine you selected earlier. You will see them both running in your system tray.



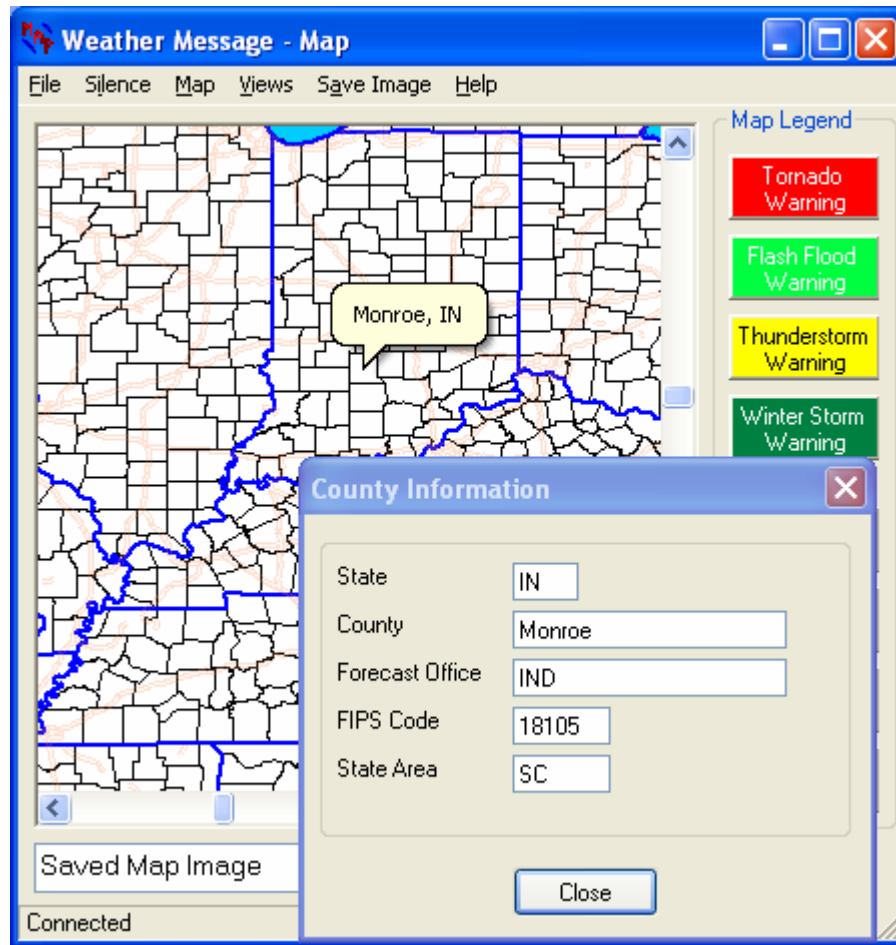
6. Start the Weather Message Client by clicking on the *Weather Message Client* icon on your desktop.
7. Start the Weather Message Map by clicking on the *Weather Message Map* icon on your desktop.
8. You should now start seeing text messages arrive in the Message Client window.
9. The software is now in the default configuration. This configuration will receive and process all of the messages received. You will want to reconfigure the alarms for your area. To do this Click **Start, Programs, Weather Message, Weather Message Server Setup**. See the Alarm Setup section of this document for quick overview of alarm setup.
10. For additional information, click Help and Weather Message Help to view the documentation.

Alarm Setup

Before you can begin to setup alarms for your local area, you need to know the Weather Forecast Office (WFO) in charge of your area. Weather Message uses the three-character WFO abbreviation to alarm messages. For example the WFO for Tallapoosa County, Alabama is Birmingham. The Birmingham WFO's abbreviation is BMX.

The easiest way to get your WFO abbreviation is to use WxMap. Start WxMap and locate your county. You may have to Zoom In / Out so you can see your county. Use the F11 key

to zoom in and the F12 key to zoom out. After locating your county, right click on the county and select "County Information". Here is an example for Monroe, Indiana.



The abbreviation for the WFO covering Monroe, Indiana is **IND**. This information will be used when you setup your alarms.

Alarms are used in Weather Message to tell the program which weather products or messages that you want to process. They are generally broken down into four categories; 1) Alarms for the Map, 2) Alarms for the Message Client, 3) Alarms for Paging, Emailing and Faxing and 4) Alarms for graphic products. The following discussion will focus on each of these categories. It is important to note that one alarm could address all four categories.

The weather products or messages created by the National Weather Service have a four to six-character product identifier. This identifier is generally referred to as the AWIPS identifier. AWIPS is the software that the NWS uses to create weather products or messages. The following is an example of a typical tornado warning weather product.

WFUS54 KBMX 301326
TORBMX
ALC113-301400-
/O.NEW.KBMX.TO.W.0054.050430T1326Z-050430T1400Z/

BULLETIN - EAS ACTIVATION REQUESTED
TORNADO WARNING
NATIONAL WEATHER SERVICE BIRMINGHAM AL
826 AM CDT SAT APR 30 2005

THE NATIONAL WEATHER SERVICE IN BIRMINGHAM HAS ISSUED A

* TORNADO WARNING FOR...
SOUTHERN RUSSELL COUNTY IN SOUTHEAST ALABAMA

* UNTIL 900 AM CDT

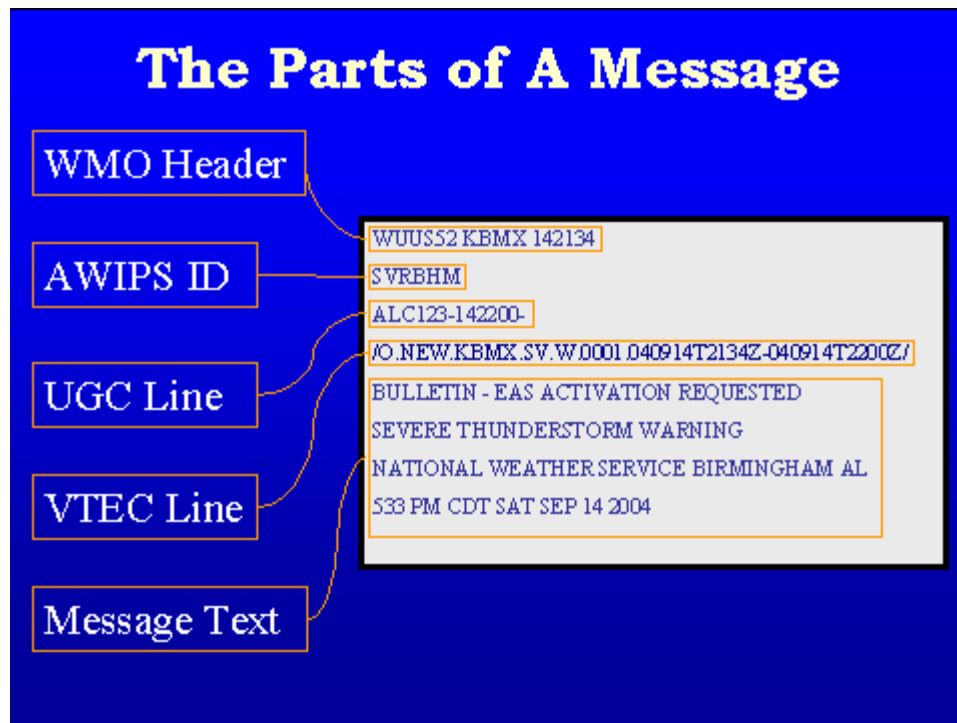
* AT 823 AM CDT...NATIONAL WEATHER SERVICE DOPPLER RADAR INDICATED A SEVERE THUNDERSTORM CAPABLE OF PRODUCING A TORNADO 8 MILES SOUTHWEST OF GLENNVILLE...OR ABOUT 11 MILES NORTHWEST OF EUFAULA... MOVING NORTHEAST AT 55 MPH.

* OTHER LOCATIONS IN THE WARNING INCLUDE BUT ARE NOT LIMITED TO PITTSVIEW...SEALE...HOLY TRINITY AND FORT MITCHELL.

HEAVY RAINFALL MAY OBSCURE THIS TORNADO. TAKE COVER NOW! IF YOU WAIT TO SEE OR HEAR IT COMING...IT MAY BE TOO LATE TO GET TO A SAFE PLACE.

TO REPORT SEVERE WEATHER...
CALL 1-800-856-0758.

The AWIPS identifier is located on the second line of the message. The different parts of the message are shown in the following graphic.



For most messages, the first 3 characters of the AWIPS identifier is the product type. The last 3 characters are the WFO abbreviation. Now that you have a basic idea and format of a

weather product we can discuss the most common alarms. The following list contains the most common warning / watch product identifiers:

- TOR - Tornado Warning
- SVR - Severe Thunderstorm Warning
- FFW - Flash Flood Warning
- WOU - Tornado and Severe Thunderstorm Watch
- FFA - Flash Flood Watch
- WSW - Winter Storm Watch / Warning
- CEM - Civil Emergency

Note: Weather Message uses the special product code WRN to cover TOR, SVR and FFW. This cuts down on the number of alarms that need to be established.

Most weather products / messages can be selected by state and county. These messages have a Universal Geographic Code (UGC) line that contains the county codes associated with the weather products. As you setup your alarms, you will need to decide if you want a message alarmed for your whole state or specific counties.

Alarms for WxMap: Alarms setup for WxMap normally cover an entire state or group of states. In this example, we will setup the watch and warning products for Indiana.

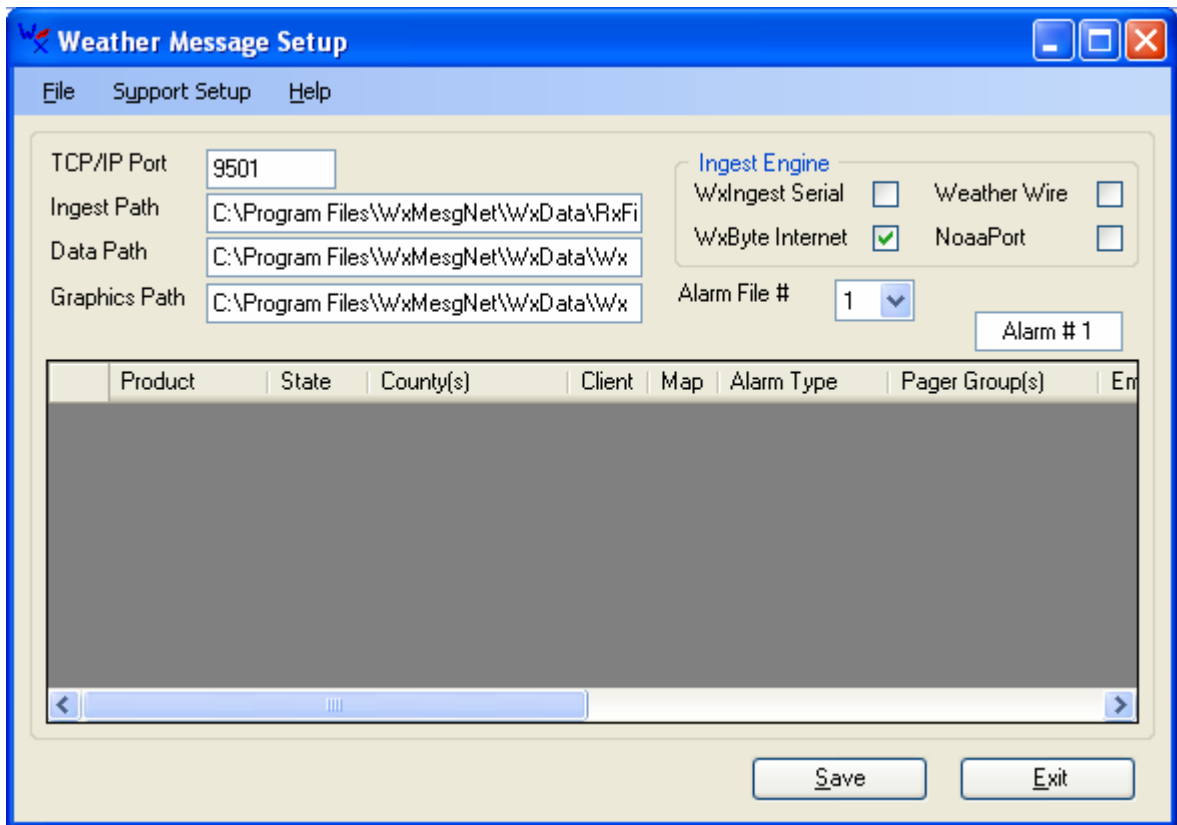
These alarms will be needed:

Product	State	Counties
WRN???	IN	Any County
WOU?	IN	Any County
FFA???	IN	Any County
WSW???	IN	Any County

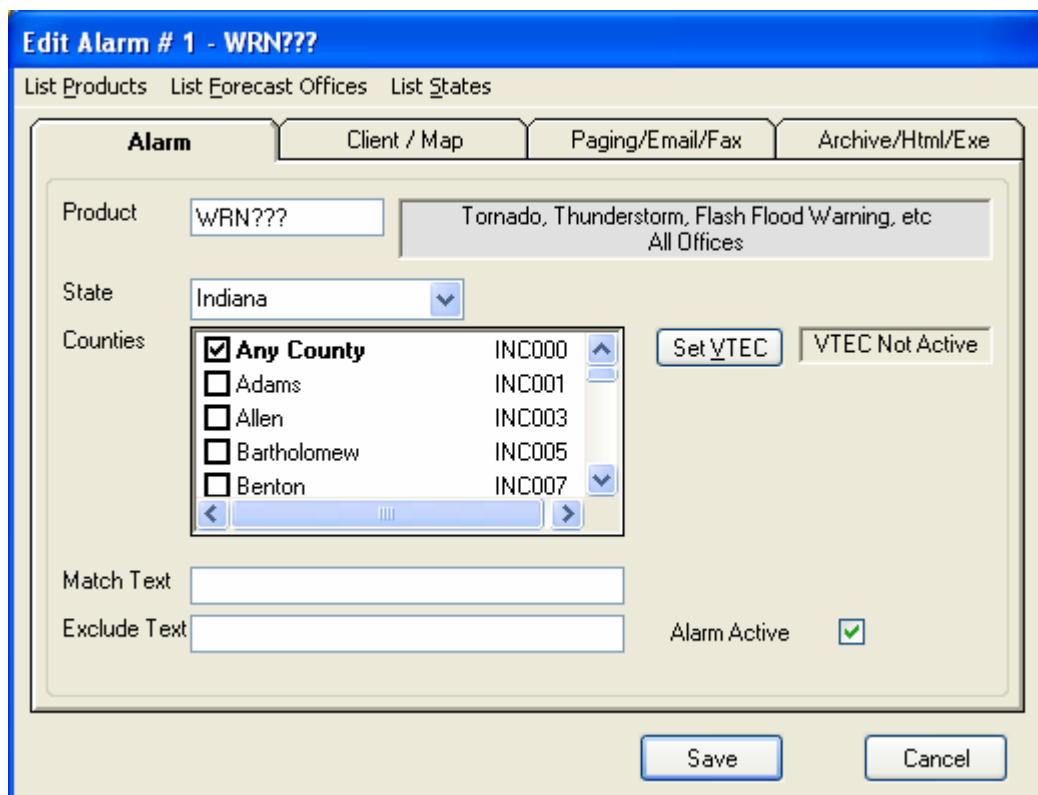
Note: For this example, we want to also send these watch / warning products to Message Client.

Start Weather Message Setup. You can click on **Start, Programs, Weather Message, Weather Message Server Setup**, or from Weather Message Server click **File** then **Setup**.

You will find the default alarms on the setup screen. You can remove these existing alarms by right clicking on the alarm and selecting delete. When you finish you will have a screen that looks like this.



We will start to enter the first alarm by right clicking inside the grid and selecting Add. Enter the first alarm as shown.



You will notice that ??? was used as the WFO identifier. This is done because the state has more than one WFO issuing messages. Weather Message supports the wild card character “?” to match any character in the position that the question mark appears.

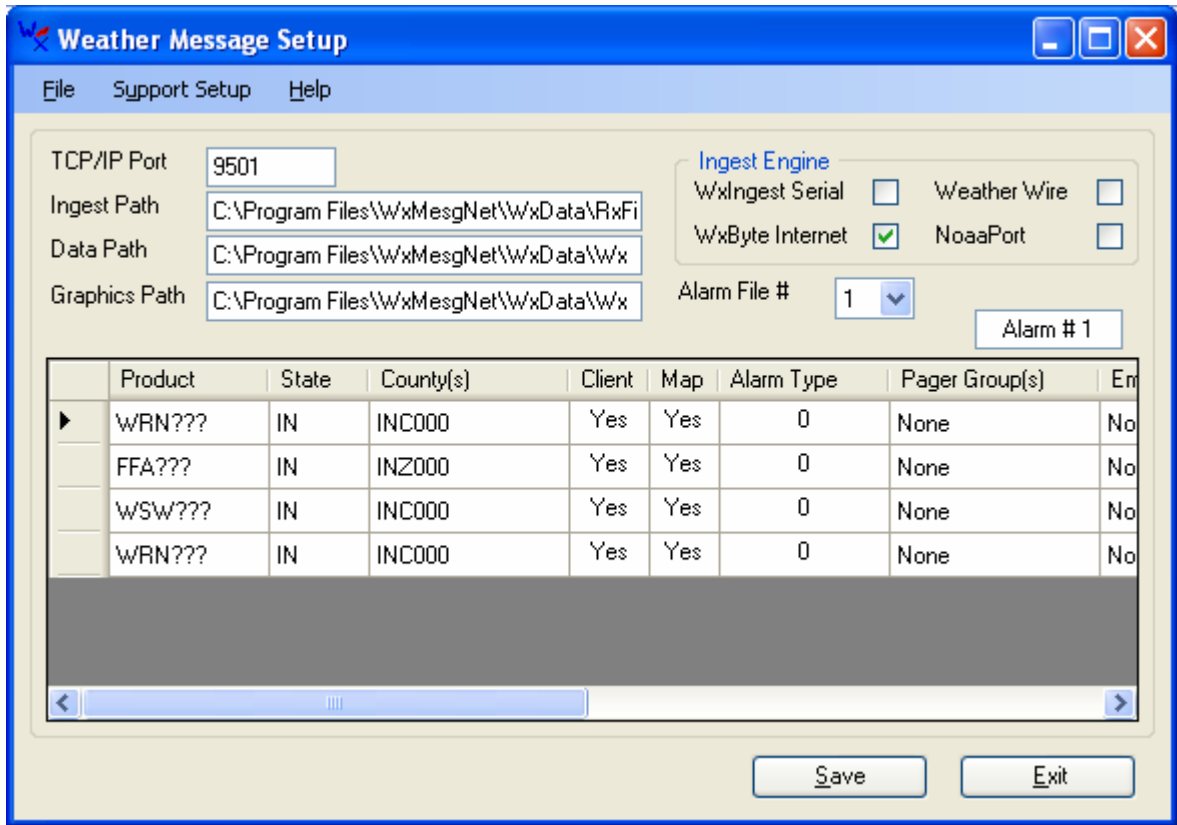
After entering the product identifier, state and selecting any county, click on the Client / Map option. Change the To Client and To Map options to Yes. This indicates to the program that you want this product sent to the Message Client and WxMap.

The screenshot shows a dialog box titled "New Alarm - WRN???" with a blue header. Below the header are three tabs: "List Products", "List Forecast Offices", and "List States". The "Client/Map/X10" tab is selected and highlighted in orange. Below the tabs are four sub-tabs: "Alarm", "Client/Map/X10", "Paging/Email/Fax", and "Archive/Html/Exe/Print". The "Client/Map/X10" sub-tab is active. The main area contains the following fields:

- "To Client": A dropdown menu with "Yes" selected.
- "To Map": A dropdown menu with "Yes" selected.
- "Alarm Type": An empty dropdown menu.
- A text label: "Alarm type is used to play sounds and/or control printing."
- "X10 Settings" section:
 - "House Code": A dropdown menu.
 - "Command": A dropdown menu.
 - "Duration": A text box containing "0".
 - A grid of checkboxes for Units 1 through 16, all of which are currently unchecked.

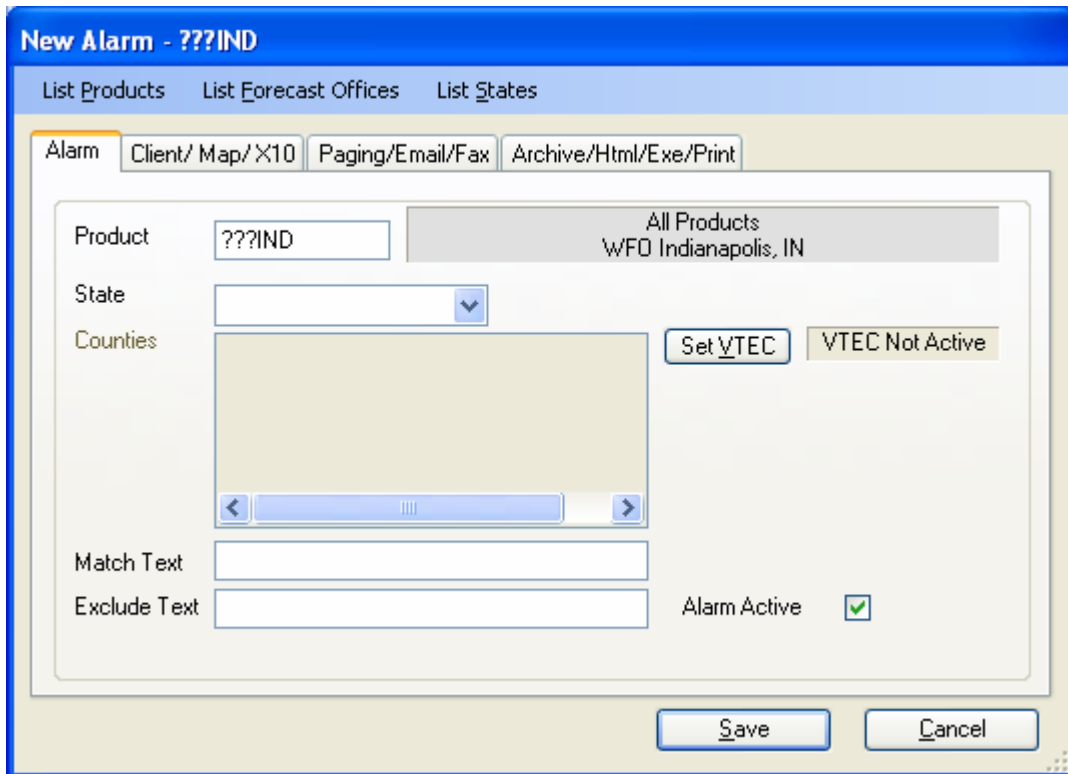
At the bottom right of the dialog box are two buttons: "Save" and "Cancel".

Now click **Save** to save this alarm. Repeat these steps for the remaining alarms. Your setup screen should look like the following.

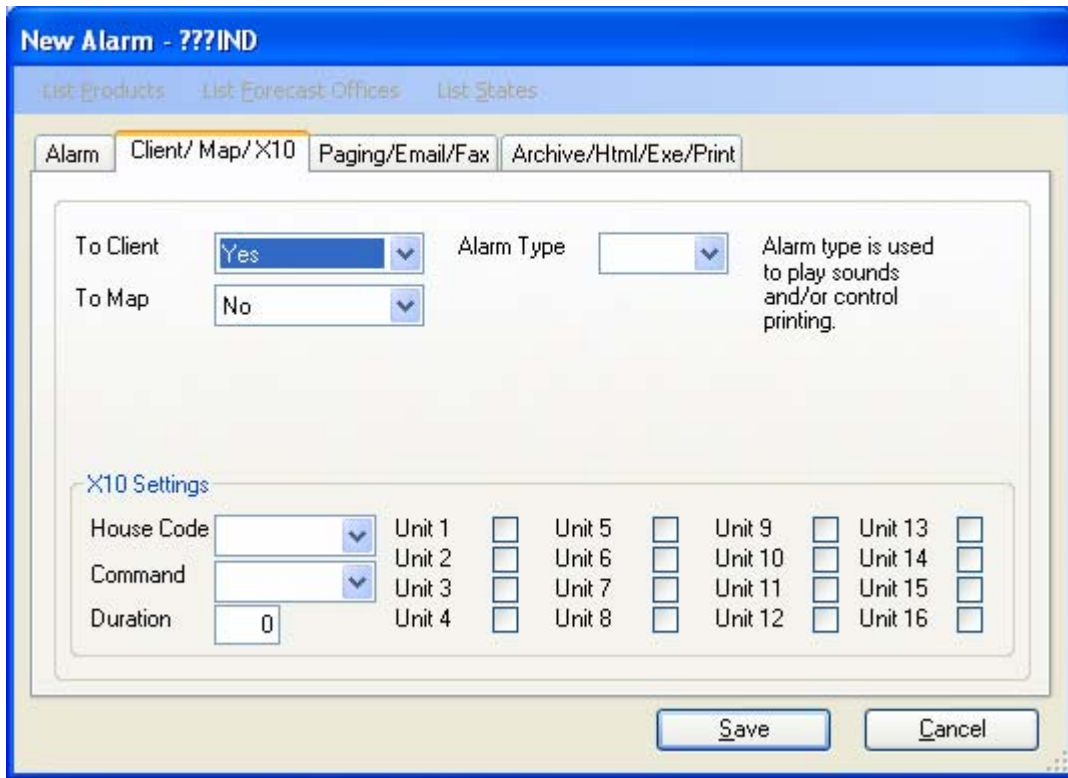


This gets the basic warning products setup for all counties in the state. If you only want specific states, you can select them from the list on the alarm setup window.

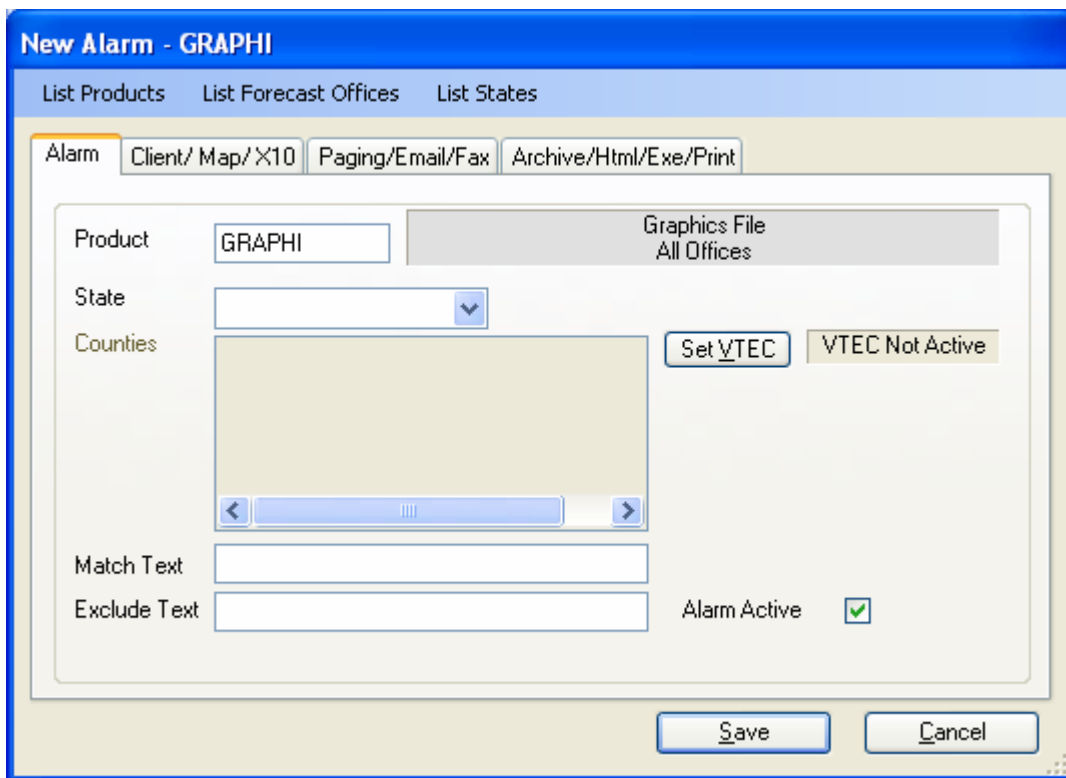
Each WFO also issues a number of other products. Since IND covers the area we are using for an example, an alarm will be setup to alarm all text products.



You will notice that no state or county was selected in this case. This will insure that you receive all products issued by the IND WFO. This alarm is only going to get sent to the Message Client, so the To Client option is set to Yes.



The EMWIN data stream contains a number of graphical products. This alarm is setup to receive those graphics.



Weather Message using the AWIPS identifier “GRAPHI” to identify and alarm all graphic products. You do not select a state for graphics. Set the To Client option to “Yes”.

Receiving all products: If you want to receive all of the products on EMWIN, you can setup an alarm with the Product Identifier “??????” and set the To Client option to “Yes”. This will send every received product to the Message Client. This option is sometimes useful to learn about the different weather products.

For additional information about alarm setup and the many other options available with Weather Message, please click Help and Weather Message Help in this setup program.